

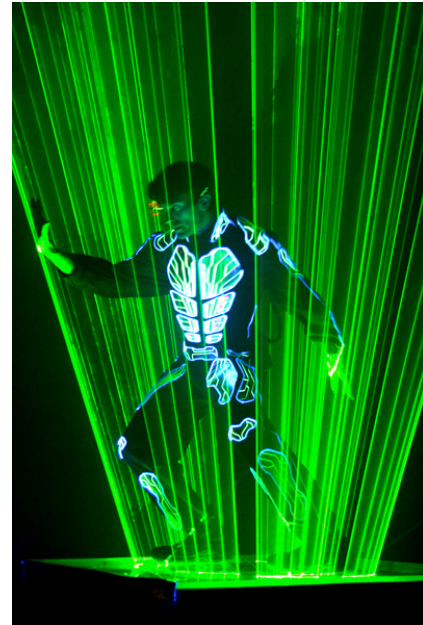
LASERMAN - 360 AND 360 Enhanced Shows

PROMOTIONAL INFORMATION:

Why 360?:

THE LASERMAN EXPERIENCE – A truly magical illusion! Blades of laser light are hand manipulated right in front of your eyes! Watch the laws of physics crumble when the performer actually "holds" a beam of light in his hands, split it into two, bend them and spin them around like a light sabre! He even throws the beams over your head, up into the roof and even creates blasts of logos and powerful messages around the room!

Ladies and gentlemen, you will now be transformed into a world encompassed in darkness, from within this darkness, a man brings the power of light from a world where physics has no boundaries, prepare yourselves for "Laserman".



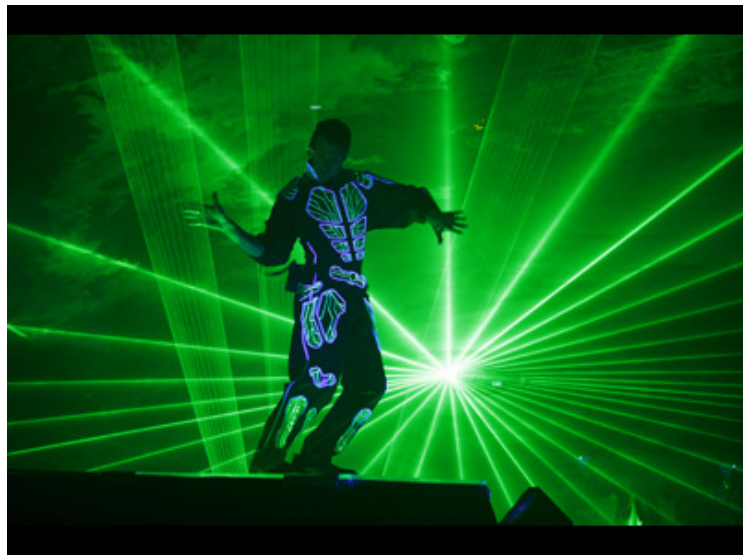
The new 360 show has been created from the past years of performing the Laserman shows and analysing all the procedures of the act and re- designing it to make load in and out faster, striking quicker and easier, the performance more impactful as well as implementing new technology to enhance the overall act.

Awards:

ILDA Awards 2003 – 1st Prize "Special Applications"

Monte-Carlo Magic Stars - Silver Wand and the SBM Prize Monaco

35th Congress of AFAP – 2nd Prize Arts Vannes



LASERMAN – 360 and Enhanced PLATFORM:

- Platform dimensions: 1200W x 1600D x 200H (mm)
- In-the-round = Requires stage area riser 1200W to 2400W x 2400D x 1200H
- On-stage = Requires stage area of 1200W x 1600D
- FOUR UV lighting is in-built, no external lighting required, just blackout
- Smoke machine and fans in built, prefer haze supplied in room for added effect
- Folds away to 1200W x 800L for quick striking

TECHNICAL CHECKLIST:

Duration of the act:

360=7m

Enhanced = 9m

Bump in setup time:

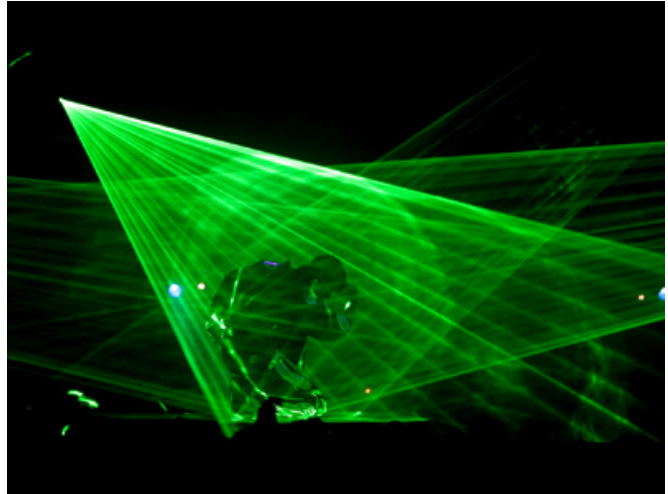
360 = approx an hour from arrival,
(30m once inside venue)

Enhanced = a maximum of 3 hours,
(usually 2hrs once inside venue)

We supply UV lighting (UV) in the platform

Our Lighting: Smoke:

This show relies entirely on smoke and haze. Please ensure the smoke detectors are isolated during the performance and rehearsal.



YOUR REQUIREMENTS TO SUPPLY:

Safety: For security issues, audience should not surround the stage (sides and back of the stage should to be protected from audience access). Minimum 3m.

Dressing room: A dressing room with mirror is required backstage with 240v power outlet.

Staging: Our platform needs to be installed onto a stage area: In-the-round = riser 1200W to 2400W x 2400D x 1200H On-stage = Requires stage area of 1200W x 1600D x stage

Rehearsal time: 20 minutes – require no house lights and smoke alarm isolation

Sound: We require stereo lines and DI-boxes at back of stage (at Laserman entrance) Sound comes from our control computer backstage

Power:

360 = TWO 240v power leads must be supplied and pre-run, 1) At Laserman platform position, 2) At Laserman backstage entrance

enhanced = FOUR 240v power leads must be supplied and pre-run, 1) At Laserman platform position, 2) At Laserman backstage entrance 3) At room laser position 1 (to be shown on floor plan pre-event) 4) At room laser position 2 (to be shown on floor plan pre-event)

Haze: Please provide hazers for room fill

LOGO PROJECTION:

360: The 360 show allows for a simple text or powerful slogan to be projected onto a nearby surface to the Laserman platform.

Enhanced: The enhanced show allows for a more intricate logo projection and is blasted into thousands of copies all around the room

